

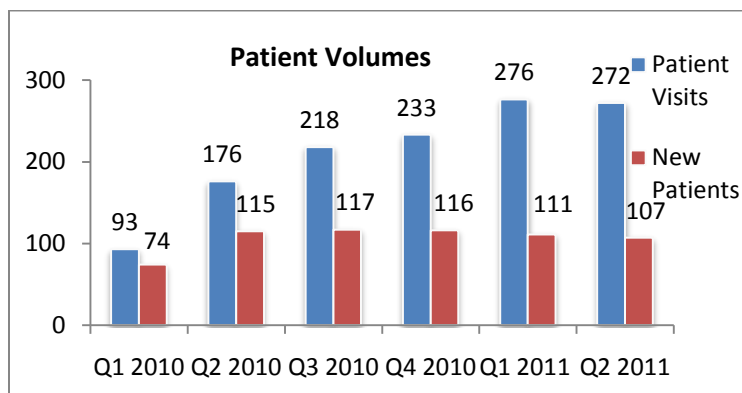


CARE CLINIC Connection

April - July 2011

Who are our Patients?

- 40% are employed and 33% are currently unemployed. The remainder are either too young for the workforce or did not answer.
- 28% are between the ages of 45-64. 30% are 24 years old or younger.
- Hispanics, the highest minority we serve are 27% of our total patients.
- Many patients say that without the clinic they would suffer and go without care



Our Dental Clinic Opened!

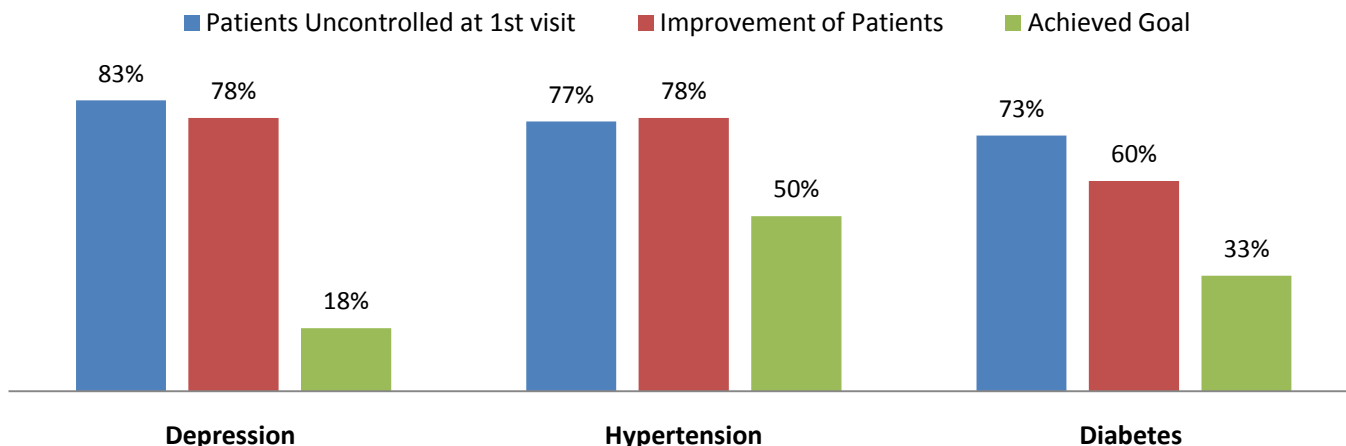
Our dental clinic opened on May 26th 2011 and has served patients weekly. Thanks to grants and donations we were able to have three dental operatories with digital x-rays. Our scope is urgent issues trying to relieve patients of pain. In 2012 we plan to expand our scope to preventative services. We are grateful for the leadership of Dr. Nancy Bremseth, our dental director, and the participation of our local dentists and dental health professionals.

- We have served 27 unduplicated patients during 34 dental appointments.
- Without any promotion of our dental clinic we have served an average of 5.7 patients each week
- There has been 18 extractions, 7 fillings and 29 x-rays performed

We continue to improve the health of our patients

- We served an average of 19.5 patients each week this quarter.
- Top urgent issues: #1- Upper Respiratory Infection #2- Skin Condition #3- Ear Infections
- Top chronic conditions: #1- Depression #2- Hypertension #3- Diabetes
- We have provided an estimated value of \$94,000 in medication through our prescription assistance program and prescriptions from local pharmacies

Health Outcomes – July 2011

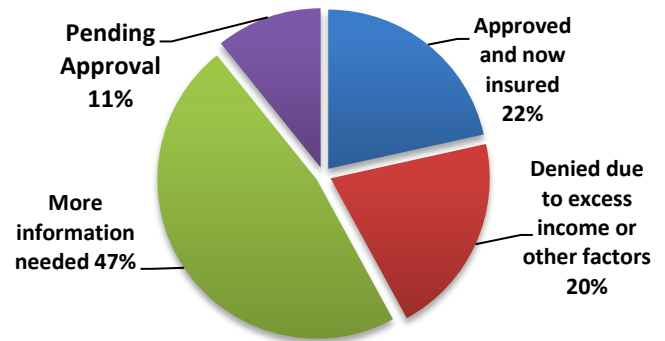


Psychologists Addressing Mental Health Issues

Depression continues to be our top chronic condition. We have seven local psychologists that volunteer each week to provide additional mental health support. They served 21 patients this quarter. We continue to work with our community partner Goodhue County Mental Health.

We Connect Patients to Resources

We have connected our patients with many local agencies helping with a variety of issues (for example food, housing and clothing). We have also referred about 30% of our patients to state health insurance plans. Here are the results of our referrals:



Thanks to our dedicated volunteers and generous funders who keep our doors open!

We are so grateful to our over 200 volunteers. During each clinic it takes about 25 volunteers to provide the needed services to our patients. In addition, many volunteers are here during the week in a variety of roles.

Our donors

Brickhouse Restaurant
Bev's Café
Corner Drug/Walgreens
Downtown Econo Foods
Fairview Auxiliary
Fairview Red Wing Health Services
Healthier Minnesota Community Clinic Fund
Insty Prints
Jones Family Foundation
Liberty's
Marie's

Mayo Clinic Cannon Falls and Lake City
MN Dept of Health
Patterson Foundation
R-Tech Dental
Red Wing Area Fund
Red Wing Construction
Red Wing Shoe Foundation
Ryan Mechanical
Suburban Radiology
United Way
Hundreds of individual donors & churches