



Protecting, Maintaining and Improving  
the Health of All Minnesotans



**MAY 2009**

**Radiation Control, X-ray Unit  
Minnesota Department of Health  
625 Robert Street North  
PO Box 64975  
St. Paul, Minnesota 55164-0975**

Phone: 651.201.4545

Fax: 651.201.4606

Website: [www.health.state.mn.us/xray](http://www.health.state.mn.us/xray)

Email: [health.xray@state.mn.us](mailto:health.xray@state.mn.us)

## ***New email address***

Our general email account has changed to [health.xray@state.mn.us](mailto:health.xray@state.mn.us). If you have tried emailing us at our new address and experienced problems, we've corrected the issue and you shouldn't have any problems in the future. Please notify us immediately if you encounter errors, thank you!

## ***Therapy Rules***

Therapy rules are currently part of Minnesota Radiation Rule, Chapter 4732. Because of the many advances in therapy, it was decided to create a new rule for therapy, 4733. A copy of the proposed rules were given to therapy physicists at the physicists meeting in April. Anyone can view the proposed rule at [www.health.state.mn.us/xray](http://www.health.state.mn.us/xray).

The preliminary comment period is open until June 1, 2009. Comments should be in writing via email to [susan.mcclanahan@state.mn.us](mailto:susan.mcclanahan@state.mn.us) or mailed to the address above. A formal period of comment will follow later, after revisions are made from the preliminary comment period.



Chapter 4732 is available at the Minnesota Bookstore for \$13.95 plus shipping and tax. Call 651.297.3000 or 1.800.657.3757 or order online at [www.comm.media.state.mn.us/bookstore/bookstore.asp](http://www.comm.media.state.mn.us/bookstore/bookstore.asp)

## ***Flood Season***

If you've had any damage to your x-ray equipment due to flooding, please contact MDH in writing. A Service Provider can determine if an x-ray unit is safe to use. If you're replacing damaged equipment, be sure to register the new piece of equipment. There are no fees for replacements, providing your fees are up-to-date. If you have any concerns, please give us a call at 651.201.4545.

## ***Install Calibrations***

Whenever a tube is replaced or new equipment is installed, an install calibration is required. Tests need to be documented by a service provider. It is important for facilities looking to purchase new equipment that the install responsibilities are clearly defined. Many facilities assume that the installer is doing all the tests, but the installer might assume that the facilities physicist will be doing some of the testing. When the installation is complete, the installer should leave paperwork at the site detailing all the tests performed with their numeric values (if applicable.)

## ***Who can take x-rays in MN?***

- Licensed practitioner of the healing arts
- Dental Assistants/Hygienists Registered with the Minnesota Dental Board
- ARRT Radiologic technologists
- ARCRT Chiropractic Radiologic Technologist
- Individuals who have passed a MN operator's exam prior to Jan. 1, 2008
- ARRT Limited Scope X-ray operators
- North Dakota operator's exam
- Veterinarian techs/assistants
- Registered Physician Assistants
- Nuclear Med techs (ARRT, NTCB) can do PET/CT
- Radiology Practitioner Assistant (RPA)
- Registered Radiologist Assistant (RRA)
- Externships: Approved programs must notify the commissioner of the sites used.

## ***Bone Density (Precision Testing) Advisory Group***

MDH Radiation Control, X-ray Unit would like to form an advisory group to look at existing bone density regulations. There are several issues: precision testing as a prohibited action in Minnesota, Dr.'s orders, qualification of operators, interpretation of exams, etc. If you would like to be part of this group, please email us at [health.xray@state.mn.us](mailto:health.xray@state.mn.us).

## ***CT and Dose Calculator***

The National Council of Radiation Protection and Measurements (NCRP) is set to publish a report on Ionizing Radiation in the US (NCRP 160) later this year. According to this report, Americans were exposed to more than seven times as much ionizing radiation from medical procedures as was the case in the early 1980s. The increase was due mostly to the higher utilization of computed tomography (CT) and nuclear medicine.

There is a website that may be helpful to radiation professionals, <http://www.xrayrisk.com/index.php>. It features a calculator to determine the increased risk factors associated with various radiology exams.

MDH will have a task group look at the current 4732 regulations to determine if there needs to be an adjustment to existing rules. If you are interested in joining this group, please contact Kimberly Pappas at 651-201-5826 or [kimberly.pappas@state.mn.us](mailto:kimberly.pappas@state.mn.us).

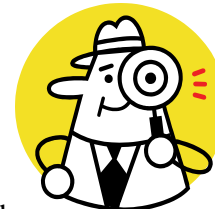
## ***Radon and granite countertops***

Radiation Control is getting questions regarding radon and granite countertops. Radon is a radioactive gas, a naturally occurring element found in soil and rock. It is the second leading cause of lung cancer and is a serious public health concern in Minnesota. Please call the Indoor Air unit at 651.201.4601 or visit [http://hps.org/documents/Radiation\\_from\\_granite\\_countertops.pdf](http://hps.org/documents/Radiation_from_granite_countertops.pdf).

To receive bulletins by email, please submit your request to [Kelly.Sabanjo@state.mn.us](mailto:Kelly.Sabanjo@state.mn.us). You can visit our website at [www.health.state.mn.us/xray](http://www.health.state.mn.us/xray), click on Publications, to see our past Bulletins.



## ***Inspector's Corner***



### **Common Inspection Citations**

With the birth of rule 4732, came two new provisions that apply to the majority of facilities in Minnesota. Citations for both of these items have become quite routine:

**Annual Audit.** Once a year, every Radiation Safety Officer is required to perform a self-check, or an "annual physical", of their radiation program. This Annual Audit will ensure that your facility is meeting all of the quality assurance/radiation safety provisions. The audit must include a review of the quality control procedures used by the facility. During the performance of the audit, you may find improper procedures, quality control tests missing, and tests performed improperly. Note these mistakes in your program and what corrective actions will be taken to ensure continued compliance. We expect the audit to be documented through comments, discussion of corrective actions taken, etc. Our website has an audit form outlining some of the items that you might want to consider reviewing for your annual self-check. You may also feel free to devise your own form or checklist. The deadline for completing your first Annual Audit under the new rule was November 2008.

**Retake/Reject Analysis.** According to rule part 4732.0535, analysis must be performed quarterly by all facilities (except for dental). Quarterly results must include a retake rate and a summary of the causes. If you take more than 1000 films/quarter, you may stop early and do your analysis when you reach 1000 films, then restart when the next quarter comes. These results should be summarized in your annual audit. There must be a procedure in the facility manual that outlines the steps that will be taken to perform retake/reject analysis.

Please take this opportunity to review the audit and retake programs at your facility to make sure you meet all of the guidelines outlined above. If you have questions please don't hesitate to call our office. Information is available on our website at [www.health.state.mn.us/xray](http://www.health.state.mn.us/xray), click on 4732 Info.